



Let **UK** Home

**2 Bedrooms**

**Flat**

Located in London

**£4,593 Per Month**



[info@letukhome.co.uk](mailto:info@letukhome.co.uk)

<https://www.letukhome.co.uk/>

01795 358 886



# 4B Merchant Square London

W2 1AN



This stunning interior designed two bedroom, two bathroom apartment is set within the heart of the Paddington Basin and the popular West End Quay.

The apartment is situated on the ninth floor of this prestigious building which features concierge service, lift service, and secure underground parking.

The stunning apartment comprises spacious living and entertaining space with a beautiful reception room with superb views of the Grand Union Canal, a superb modern fitted open plan kitchen, two bedrooms, two bathrooms and ample storage space.

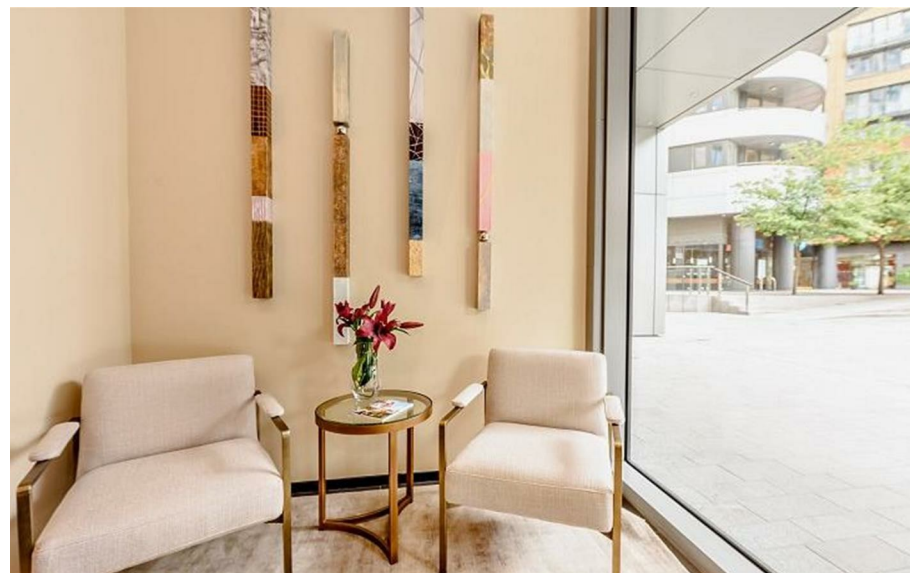
The apartment offers easy access to superb transport links such as Paddington Train Station (Elizabeth Line, Bakerloo, Hammersmith & City, Circle, District lines and Heathrow Express) Edgware Road (Circle, District and Bakerloo lines).

# 4B Merchant Square London

## £4,593 Per Month



- 9th Floor
- Private underground parking spaces
- CCTV
- Available furnished or unfurnished
- Digital TV
- Concierge service
- Canal views
- Great transport links
- Video Entry





Let **UK** Home

3F 2 Eastbourne Terrace  
Paddington  
London  
W2 6LG

01795 358 886

info@letukhome.co.uk

## Council Tax Band:

## Local Authority:

Agents Note: Whilst every care has been taken to prepare these particulars, they are for guidance purposes only. All measurements are approximate and are for general guidance purposes only and whilst every care has been taken to ensure their accuracy, they should not be relied upon and potential buyers/tenants are advised to recheck the measurements.

Energy Efficiency Rating		
	Current	Potential
Very energy efficient - lower running costs		
(92 plus) <b>A</b>		
(81-91) <b>B</b>		
(69-80) <b>C</b>		
(55-68) <b>D</b>		
(39-54) <b>E</b>		
(21-38) <b>F</b>		
(1-20) <b>G</b>		
Not energy efficient - higher running costs		
England & Wales		
EU Directive 2002/91/EC		

<https://www.letukhome.co.uk/>